

Tutoring Outcomes All Modalities

Term	Number of Courses impacted by tutoring	Number of Students Tutored	Persistence rates of tutored students
Autumn 2012	253	3,374	AU12 to SP 13 75.4% AU12 to AU13 48.19%
Spring 2013	309	3,646	
Summer 2013	219	2,088	
Autumn 2013	276	3,613	AU13 to SP 14 71.6% AU13 to AU14 46.7%
Spring 2014	279	3,420	
Summer 2014	190	1,795	
Autumn 2014	227	3,200	AU14 to SP 15 72.6% AU14 to AU15 50.0%
Spring 2015	241	2,820	
Summer 2015	149	1,373	AU15 to SP16 76.7%
Autumn 2015	223	3,179	

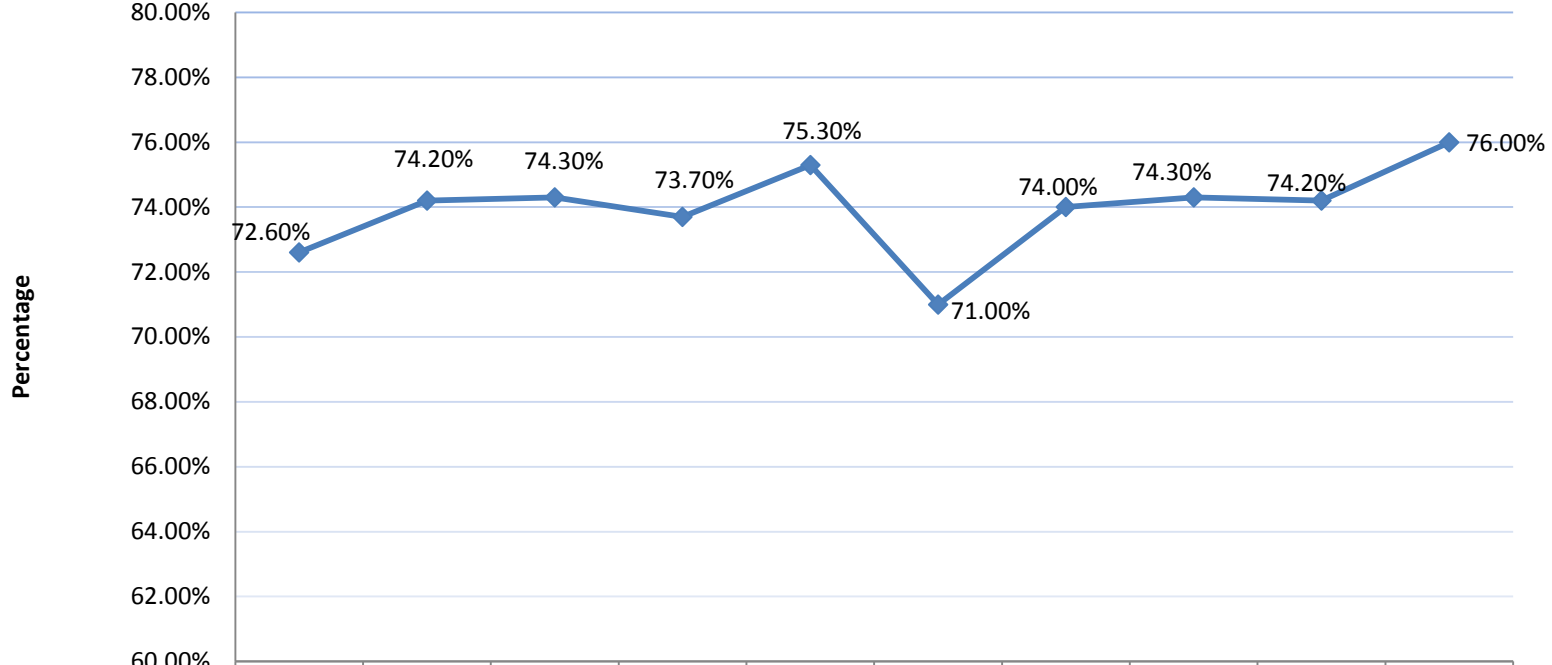
Source: TutorTrac 4/14/2016

Tutoring Outcomes All Modalities

Term	Success completion rates Tutored students	Success completion rates Not-tutored students	Withdrawal rate Tutored Students	Withdrawal rates Not Tutored Students
Autumn 2012	72.6%	66.3%	6.9%	10.0%
Spring 2013	74.2%	67.5%	5.9%	8.4%
Summer 2013	74.3%	70.8%	6.6%	8.8%
Autumn 2013	73.7%	69.5%	5.5%	7.2%
Spring 2014	75.3%	71.4%	5.2%	6.6%
Summer 2014	71.0%	73.1%	6.3%	6.6%
Autumn 2014	74.0%	70.9%	5.5%	6.5%
Spring 2015	74.3%	71.6%	4.3%	6.0%
Summer 2015	74.2%	76.7%	5.3%	6.2%
Autumn 2015	76.0%	70.6%	5.3%	6.8%

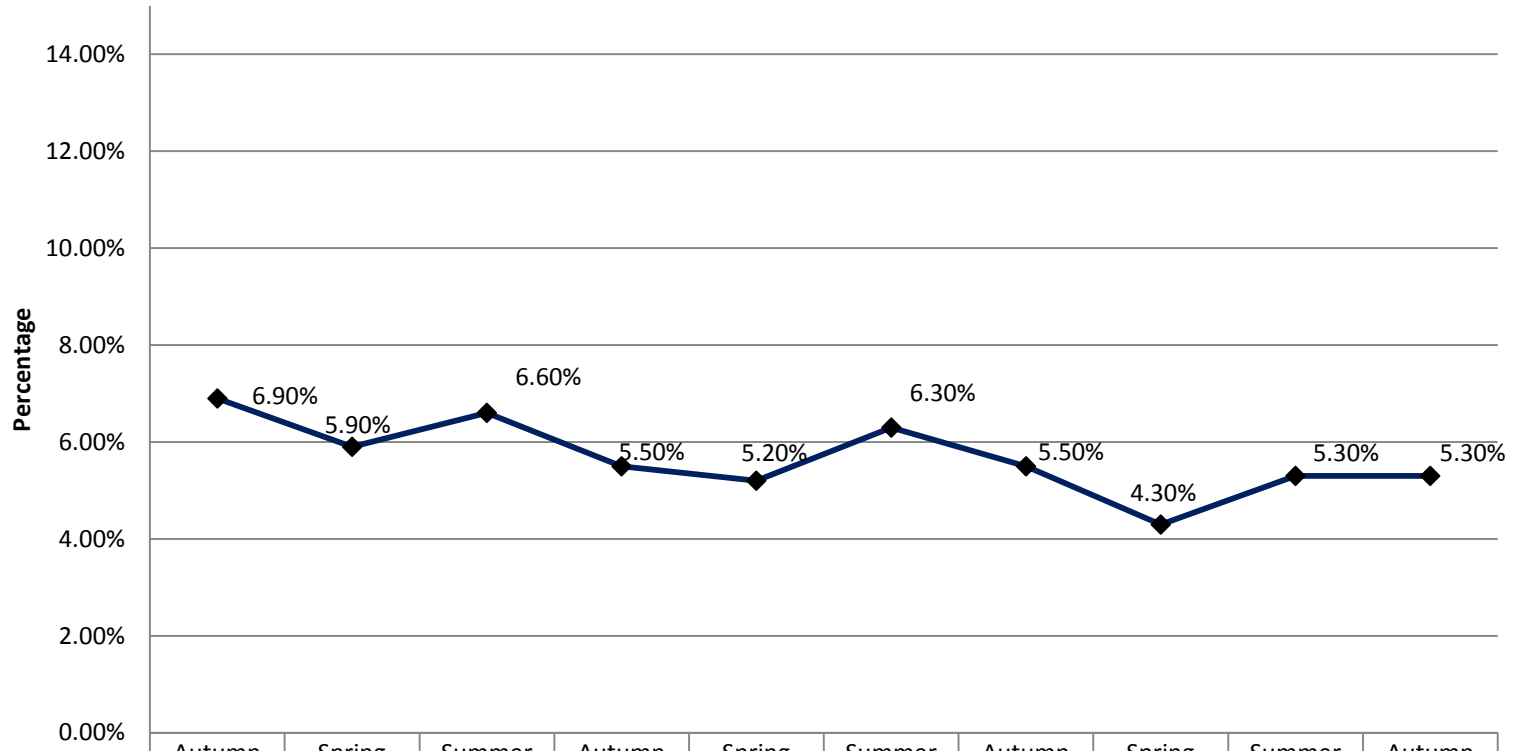
Source: TutorTrac 4/14/2016

Success Rate Tutored students



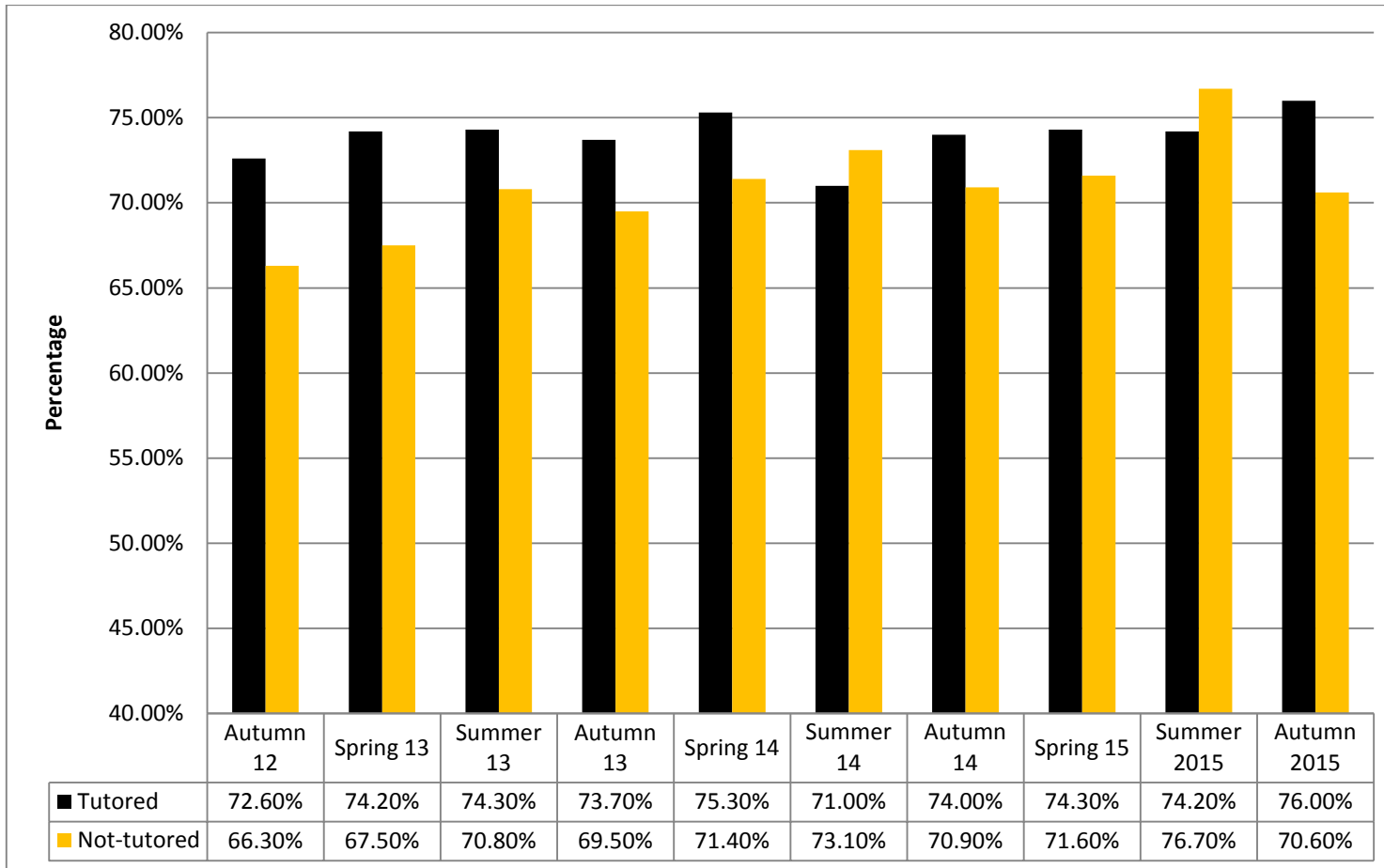
	Autumn 2012	Spring 2013	Summer 2013	Autumn 2013	Spring 2014	Summer 2014	Autumn 2014	Spring 2015	Summer 2015	Autumn 2015
◆ Rate (%)	72.60%	74.20%	74.30%	73.70%	75.30%	71.00%	74.00%	74.30%	74.20%	76.00%

Withdrawal Rates Tutored students



◆ Rate (%)	Autumn 2012	Spring 2013	Summer 2013	Autumn 2013	Spring 2014	Summer 2014	Autumn 2014	Spring 2015	Summer 2015	Autumn 2015
	6.90%	5.90%	6.60%	5.50%	5.20%	6.30%	5.50%	4.30%	5.30%	5.30%

Comparison of success rates of students Tutored and Not-tutored



Comparison of withdrawal rates of students Tutored and Not-tutored

