

SERVICES FOR OUT-OF-NETWORK COLLEGES

Packages are available for colleges that are not in the ATD Network. They include:

- **College Student Success Kickoff Experience.** Multi-day event, including facilitated team times by an ATD coach, held concurrently with the annual Kickoff Institute for colleges that are new to the ATD Network.
 - **Institutional Capacity Assessment Tool and Capacity Café.** Benefit from getting insight into institutional strengths and areas to improve, broad engagement of stakeholders from all areas of the college, identification of gaps in communication and perception, a common language to spark dialogue and identification of action steps to inform strategic planning.
 - **Open Educational Resources (OER) Planning & Strategy Workshop.** Full-day workshop to help institutional stakeholders, including college leaders, build a foundational understanding of OER adoption and use and develop a strategic rationale for institution-wide OER implementation.
 - **Holistic Student Supports Opportunity Assessment.** Two-day onsite assessment builds momentum for holistic student supports redesign, identifies challenges and opportunities unique to your institution, and unifies college leadership around an implementation plan for delivering on a seamless and personalized student support model. Facilitated by two ATD coaches and experts matched to your college based on your institution's needs and goals.
 - **Holistic Student Supports Professional Development Workshop.** Five-hour workshop provides professional development for a broad range of institutional stakeholders and builds foundational understanding for holistic student supports redesign.
 - **Holistic Student Supports Redesign.** Available in one-year or three-year engagements, this work centers on the practical application of student-centered design and equity-based systems design across the entire institution and the integration of pathways principles into coaching to support colleges in optimizing the student experience.
- Fees for these services are higher for colleges that are not part of the ATD Network.*



CUSTOMIZED NETWORK MODEL

A SUITE OF SUPPORTS, PROGRAMS, AND RESOURCES 2019-20 PARTICIPATION YEAR

Achieving the Dream leads America's largest network of community colleges working to become strong engines of student and community growth. ATD's proven model helps colleges identify emerging needs and ways to improve practices across the full spectrum of capacities required for whole-college reform.

Our customized model offers colleges in the ATD Network and outside of the Network a diverse suite of unique supports, programs, and resources that specifically match their student success needs.

For example, ATD supports new institutions in the Network through an intensive three-year engagement that includes a full-range of foundational services that focuses on building capacity throughout the institution in seven core areas

needed for holistic change, implementing pathways, and fostering a student-focused culture.

A full suite of services and benefits are available to colleges that have completed their three-year engagement in the ATD Network. Those include ATD Network Benefits, Services, and Custom Coaching.

Colleges that are currently in their three-year engagement in the Network and beyond can purchase Supplemental Services, such as workshops and assessments.

ATD also offers packages of custom services for colleges outside the network that help them measure progress in key areas, participate in a broad range of professional development workshops, and take action.

TO LEARN MORE ABOUT WHICH SERVICES MATCH YOUR INSTITUTION'S NEEDS AND GOALS, PLEASE VISIT:

www.achievingthedream.org



8484 Georgia Avenue, Suite 500
Silver Spring, Maryland 20910

Phone: 240.450.0075
Fax: 240.450.0076

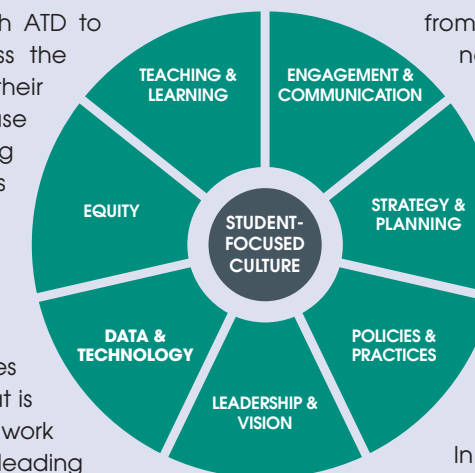
Facebook: @AchievingTheDream
Twitter: @AchieveTheDream

THE ATD MODEL: BUILDING CORE CAPACITIES

Hundreds of colleges have worked with ATD to build institutional capacities to address the crucial challenges that confront them in their efforts to better serve students and increase student outcomes. The collective learning of our network of institutions and partners helps us innovate and anticipate future needs and issues to ensure the community college movement will remain relevant in the face of continual change.

We help institutions transform themselves at all levels using a coaching process that is continually informed and improved by our work in facilitating institutional change and leading research and development projects to address emerging areas of need. We provide college leaders, focused on implementing a comprehensive improvement strategy, a safe space for courageous conversations with their peers and to try new things, innovate, and improve. Our staff and coaches serve as trusted advisors to help build capacities that research demonstrates make a difference in student outcomes.

Our coaching, tools, and support are designed to meet institutions where they are in their student success journey—



from the earliest steps of understanding student needs to reassessing and refining established strategies and supports.

ATD's **Institutional Capacity Assessment Tool (ICAT)** helps colleges pinpoint strengths and weaknesses across seven capacity areas. Armed with targeted insights, ATD deploys coaches to provide coordinated, personalized advice to help college leaders generate strategies and develop implementation plans for the coming years.

In the first three years, ATD focuses on developing a student-focused culture and strengthening key internal capacities. Each college will take a unique path in developing these capacities, but in general ATD helps colleges aim to achieve concrete progress in the highest priority areas. While institutions come to us at different levels of capacity and performance, different student demographics and varied local economies, colleges in the ATD Network have been able to customize their support and work to make gains in the institutional capacity areas most critical to the institution.

FOR COLLEGES IN THE ATD NETWORK

A number of service options of various intensities, durations, and price points are available for institutions in the Network. Each of the services listed below include ATD Network Benefits (outlined in blue box).

- **ATD Foundational Experience** is an intensive, three-year engagement that serves as the entry point for first-time ATD Network colleges. It focuses on building capacity throughout the institution in seven core areas needed for holistic change, pathways redesign, and fostering a student-focused culture (see The ATD Model on first page).
- **Holistic Student Supports Redesign Services** helps colleges integrate myriad programs and services to improve operations and accelerate improved student outcomes. It centers on the practical application of student-centered design and equity-based systems design across the entire institution including integration of pathways principles into coaching to support colleges in optimizing the student experience. Expert holistic student support coaching team works with your college to address core issues. (Available as a one- or three-year engagement.)
- **Teaching and Learning Capacity Building Services** helps colleges organize and go beyond narrow programmatic reforms to transforming teaching and learning in every classroom. We deliver this work centrally within a faculty development unit, such as a Center for Teaching Excellence, to ensure colleges provide focused and sustainable classroom-based reform. Our expert T&L coaching team will work with

your college to build a vibrant culture of teaching and learning excellence on your campus. (Available as a one- or three-year engagement.)

- **ATD Custom Coaching Services** can be packaged with coaches assigned based on the institution's needs. All coaches are skilled in using a pathways framework to help colleges in a number of critical areas.
- **College Student Success Relaunch** offers colleges that have been in the ATD Network for several years or have experienced a leadership transition the opportunity to relaunch their student success efforts. Colleges will re-energize the student success effort, continue to work on the fundamentals in the Institutional Capacity Framework, engage the broader college community as change agents, orient new staff and team members to the ATD Network, build alignment with student success efforts and pathways principles through an equity lens, and jumpstart the next phase of the institutional student success journey.
- **Supplemental Services** include additional assessments, services, professional development, and workshops available to Network or non-Network institutions in areas such as data and technology assessment, teaching and learning, Holistic Student Supports, and the ICAT Survey.

Customized Coaching

Colleges that continue in the ATD Network after their initial experience not only continue with the fundamental work of capacity building, but also delve deeper into key challenges for ongoing improvement. For colleges that have already strengthened core competencies, we offer a suite of targeted coaching services—in areas like teaching and learning and holistic student supports—that colleges can use at any time, but are particularly valuable once the initial capacity building work is complete.

ATD Supplemental Services

Supplemental Services are available for purchase if your institution is part of the ATD Network (through purchase of Network Benefits, Foundational Services, Innovation Services, or Custom Service Workshops and assessments). They include:

Teaching and Learning

- Teaching and Learning Professional Development Workshop
- Open Educational Resources (OER) Planning & Strategy Workshop
- Teaching and Learning Opportunity Assessment

Data and Technology

- Data and Technology Assessment

Holistic Student Supports

- Holistic Student Supports Professional Development Workshop
- Holistic Student Supports Opportunity Assessment

COACHING PACKAGES

1 Coach, 2 Visits

- Network benefits
- One coach
- Two 1.5 day sessions with coach on campus

1 Coach, 1 Visit

- Network benefits
- One coach
- One 1.5 day session with coach on campus

2 Coaches, 2 Visits

- Network benefits
- Two coaches
- Two 1.5 day sessions with coaches on campus

2 Coaches, 1 Visit

- Network benefits
- Two coaches
- One 1.5 day session with coaches on campus

VIRTUAL COACHING EXPERIENCE

- Network benefits
- One virtual coach
- Three days of virtual coaching

CUSTOM BUILD

- ATD works with institution to customize a service that fits more specific needs that won't fit into one of the pre-determined custom coach packages

ATD SERVICES FOR NETWORK & OUT-OF-NETWORK COLLEGES

Foundational (Includes ATD Benefits)	3 Year Experience			
SERVICES & BENEFITS AVAILABLE AFTER 3 YEAR NETWORK ENGAGEMENT				
ATD Standard Benefits	ATD Network Participation			
Services ATD Benefits Included	Holistic Student Supports	Teaching and Learning		
Custom Coaching Services ATD Benefits Included	Coaching Packages		Custom Build	
SERVICES AVAILABLE ONLY TO NETWORK PARTICIPANTS				
Supplemental Services	Workshops & Assessments			
OUT OF NETWORK (NO PRIOR ATD PARTICIPATION)				
Out of Network Services (No network benefits included)	Holistic Student Supports	Teaching and Learning	Selected Workshops & Assessments	ICAT & Café

BENEFITS PROVIDED TO ALL ATD NETWORK COLLEGES WITH THE PURCHASE OF FOUNDATIONAL, PROGRAM, AND CUSTOM SERVICES

- **Access to the Institutional Capacity Assessment Tool (ICAT)**, an online self-assessment that helps colleges determine current level of seven capacities that must be in place for colleges to create a student-focused culture that promotes success.
- **Custom National Student Clearinghouse Student Success Reports** to monitor metrics that matter on degree-seeking students, including the option to participate in the **Postsecondary Data Partnership**.
- **In-Network pricing for extensive learning opportunities** such as annual ATD Holistic Student Supports Institute, ATD Teaching & Learning Summit, and ATD Data & Analytics Summit. Access to meetings and convenings that address building student success practices, identifying issues and solutions, and discussing trends around equity, leadership and vision, engagement and communication, policies and practices, and strategy and planning
- **Two full-paid registrations to ATD's premier four-day national convening, DREAM.** Includes access to all content, meetings, receptions, and a face-to-face meeting with your coach on site. Pre-conference workshops available at in-network price.
- **One hour of coach time at DREAM** convening with a subject matter expert coach or coach of choice
- **Engagement with coaches, peers, ATD staff, and content on ATD Connect**, the online community portal exclusively for colleges in the Network
- **Networking opportunities** with thousands of peers, higher education policy makers, and industry leaders
- **Access to the full library of Network resources**, content, reports, research, and services
- **Unlimited and free access** to all ATD webinars, publications and toolkits
- **Eligibility for innovation grants** (e.g., Open Educational Resources, Engaging Adjunct Faculty, Digital Learning)
- **Opportunity to gain recognition** through the national Leah Meyer Austin Award as well as other awards and public recognition available only to ATD Network colleges
- **Opportunity to certify or recertify for Leader College status and Leader College of Distinction status** after third year in the Network